



LENA  
POPE

**IMPACT  
REPORT  
2020/2021**



LENA  
POPE

INVEST. ENGAGE.  
IMPROVE.

# IMPACT REPORT 2020/2021

*This year, your support reminded our clients that they are seen, cared for, and loved.*

*We saw the needs of our clients increase and rallied to meet them in their time of need. We worked together to combat learning loss, increased mental health needs, and the drastic rise in suicidal ideation in our community. Because of your support, we were once again able to respond to the needs of our community to ensure vulnerable children and families received the services they needed to thrive. The impact of philanthropy shined brightly, allowing us to renovate unused space on campus to create more counseling rooms, hire more full-time therapists, and continue to successfully provide services to clients virtually and in person.*



*We also celebrated three milestone anniversaries:*

*30 years of the Marty Leonard Community Chapel*

*60 years of service by Marty Leonard*

*90 years of Lena Pope*

*Thank you for your commitment to our mission and to the children and families we serve.*

A handwritten signature in black ink that reads "Ashley Elgin, Ph.D.".

Ashley Elgin, Ph.D.

Chief Executive Officer

*"In a time where uncertainty was the norm, Lena Pope stepped up to be a source of stability for our family."*

*- Lena Pope Client*

**CELEBRATING 30, HONORING 60,  
COMMITTING TO THE NEXT 90.**



Almost 200 guests joined us on November 3rd, 2021 to celebrate three milestone anniversaries. We re-dedicated the Marty Leonard Community Chapel, honored Marty Leonard and her decades of service, and Ashley Elgin, Ph.D. shared our vision for the future. Lena Pope is committed to walking alongside our community through all the challenges and celebrations that come in the next 90 years.



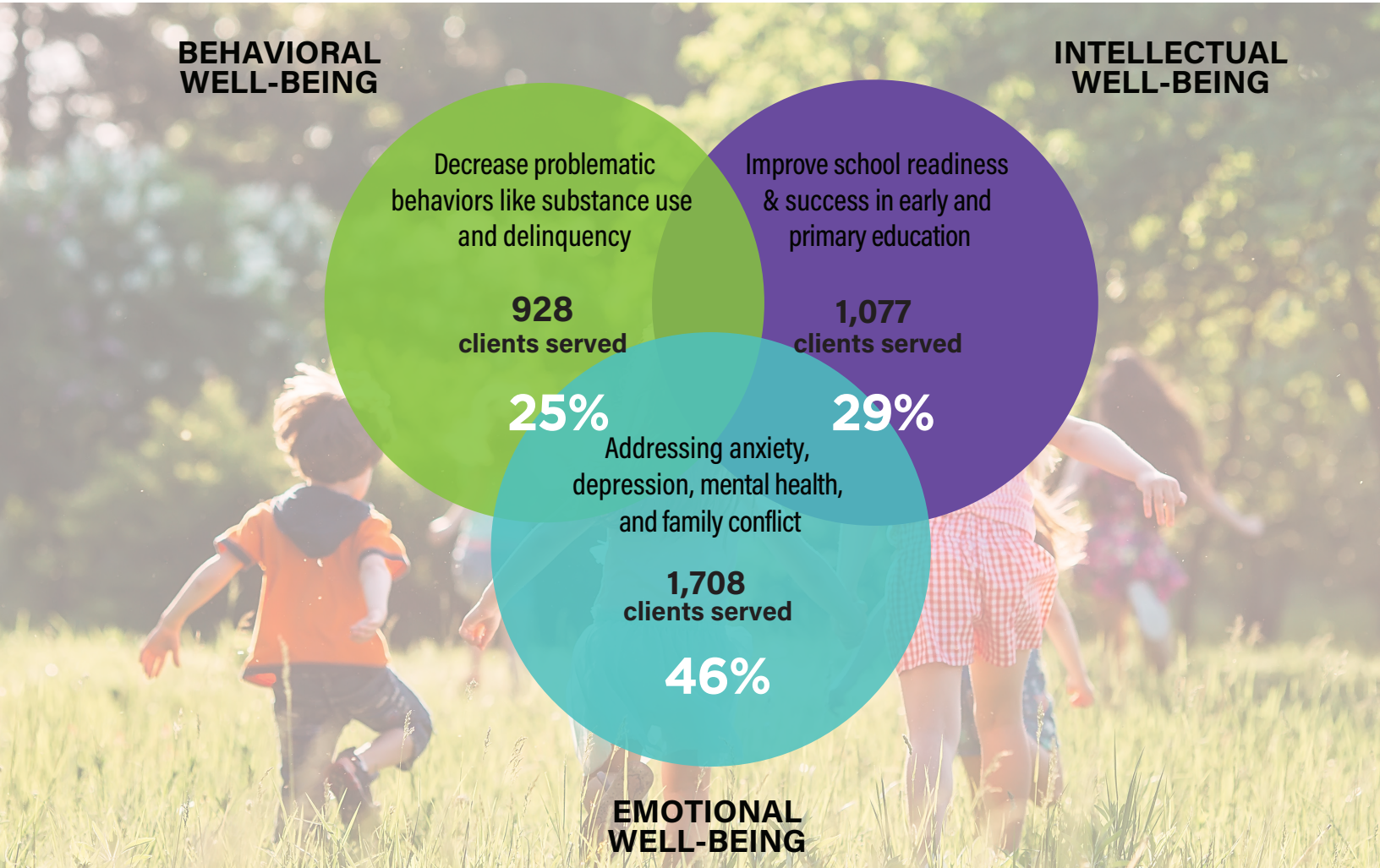
# WHY FAMILIES COME TO LENA POPE

## BEHAVIORAL WELL-BEING

- Behavioral and therapeutic interventions for youth involved with the juvenile justice system.
- Second Opportunity for Success (SOS)® reduces recidivism rate among first offenders.
- Short-term, research-tested counseling program, Functional Family Therapy®, offered to at-risk youth and their families.
- Partner with Tarrant County Juvenile Services, the Texas Juvenile Justice Department, the City of Fort Worth, and others.

## INTELLECTUAL WELL-BEING

- Two Early Learning Centers (ELC) ensure children are kindergarten-ready.
- Tuition-free public charter school, Chapel Hill Academy, for pre-k to 8th grade.
- Social-emotional learning, family engagement, and evidence-based curricula like High Scope®, Conscious Discipline®, and Second Step®.
- High-quality education opportunities available to all children regardless of their family's ability to pay.



## EMOTIONAL WELL-BEING

- Counseling and out-patient substance use services provided to children, families, and adults regardless of ability to pay.
- Clients see us for issues including anxiety, depression, substance use, trauma, and behavior challenges.
- Counseling services utilize evidence-based and trauma-informed practices to improve child and family well-being.
- Partner with MHMR, Our Community Our Kids (OCOK), Fort Worth ISD, and Department of Family and Protective Services to provide services to some of the most vulnerable in our community.

95 %

of youth receiving services to reduce criminal behaviors had no additional criminal charges filed while enrolled in services.

97 %

of clients saw improvement after receiving support from Lena Pope.

97 %

of students entering kindergarten upon graduation from the ELC met or exceeded expectations for kindergarten-readiness.

98 %

of clients said they felt Lena Pope staff were caring, compassionate, and knowledgeable.

98 %

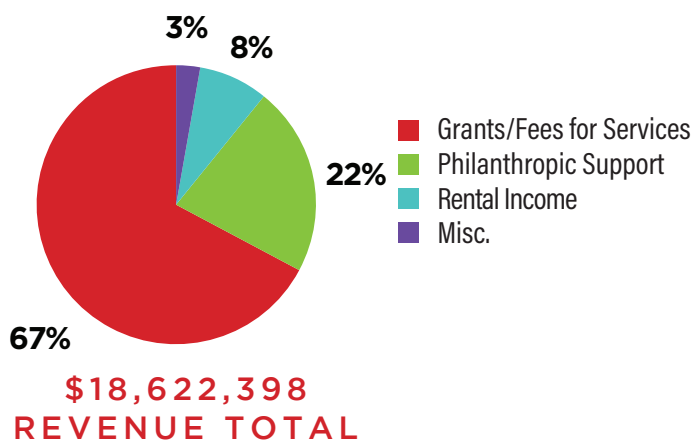
of clients were satisfied with the services they received at Lena Pope.



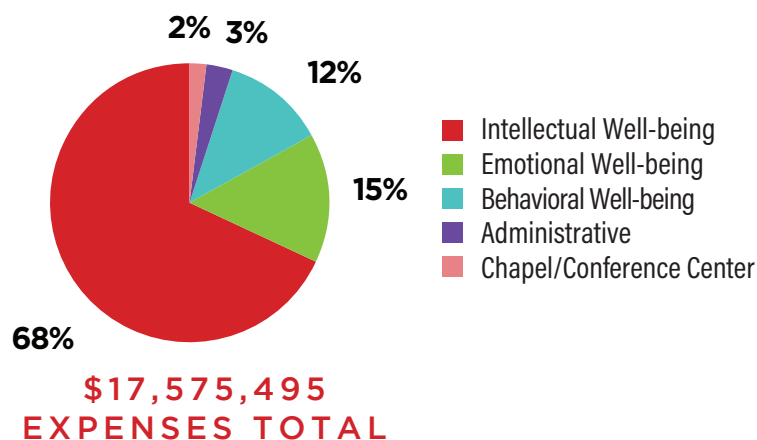


## 2020/2021 FISCAL YEAR SEPTEMBER 1, 2020 - AUGUST 31, 2021

REVENUE\*



EXPENSES\*\*

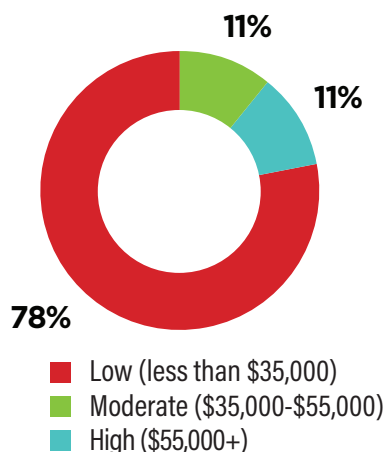


\*\*Total revenue excludes PPP loan forgiveness and non-operating items including investment gains on beneficiary trust assets primarily in oil and gas and unrealized gain on interest rate swap.

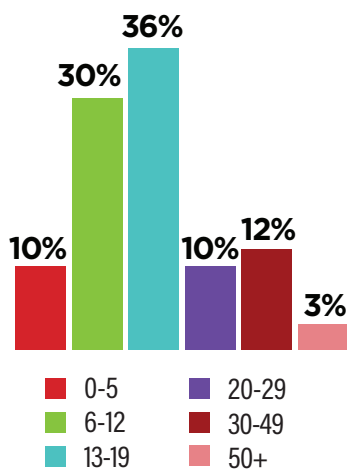
\*\*Total expenses excludes depreciation. Fundraising expenses have been allocated to each program category. To receive a copy of our complete audited financials, please contact a donor relations representative at 817-255-2646 or [donorrelations@lenapope.org](mailto:donorrelations@lenapope.org).

## 3,713 CLIENTS SERVED THIS YEAR

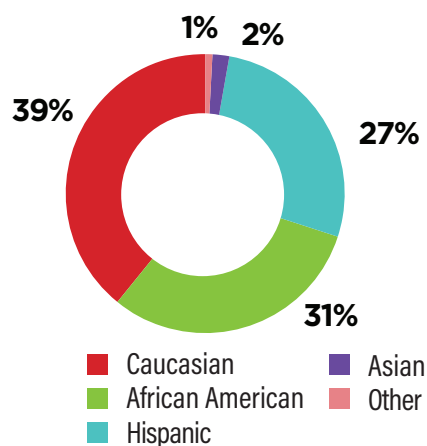
INCOME



AGE



ETHNICITY



GENDER



# YOU MADE A DIFFERENCE FOR OUR CLIENTS

Your support helped us serve more than 1,000 clients who needed financial assistance. Philanthropy ensures clients who don't have insurance can access mental health services by providing flexible fees based on income. Philanthropy ensures families utilizing childcare subsidies can attend our Early Learning Centers. Philanthropy provides assistance for our clients when they experience a financial emergency or challenging circumstance. Philanthropy also provides enrichment experiences that our families may not be able to afford.

More than  
**1,000**  
additional clients  
received the support  
they needed because  
of your generosity.

## THE IMPACT OF A STOCKED FRIDGE

April moved into a safe home with her daughter in February 2021, and then the winter storm hit. She worried she would have to take her daughter back to the abusive situation they had just left, but Lena Pope's Client Assistance Program provided a full fridge of groceries so they could stay at their new home. She said, *"I never knew there were people out there who truly cared about me."*

***You brought her hope when she thought no one else was there.***



## CONSISTENT CARE AND STABILITY

*"The teachers are so loving and caring, helping my daughter achieve her milestones and develop into an amazing little girl. ELC staff holds a special place in our hearts because this isn't just a school, it's an environment of love and happiness for all of the children."* - Olivia's Mom. During Olivia's first year of life she experienced many changes: the pandemic hit, her family moved, and she changed child care centers. The Early Learning Center staff welcomed her with open arms and gave her stability.

***You provided security and stability to children and families.***

## TANGIBLE TOOLS FOR SUCCESS

Through both the School Supply Drive and the Holiday Angel Tree Program, you provided tangible support to our clients. School supplies for our counseling clients and Chapel Hill Academy students help give them the best chance at success. Providing gifts for clients in all of our programs helps parents give their children magical moments during a difficult year.

***You gave them what they needed to succeed and enjoy a holiday season together.***





# Making the Most Impact

*Investing in children today leads to a lifetime of success.*

## TAX-WISE GIVING STRATEGIES. MAKING YOUR GIFTS GO FURTHER.

### **Make a charitable IRA Distribution**

If you are age 70½ or older, you and your spouse can each direct up to \$100,000 from your IRA to Lena Pope, without triggering federal income tax on the withdrawal. Contact your IRA administrator for more info.

### **Give appreciated securities**

Giving appreciated stocks, bonds, or mutual fund shares can be a tax-advantaged way to provide support to Lena Pope. You avoid capital gains tax on the appreciation (if held for more than one year) and you receive an income tax deduction for the fair market value. Because we receive stock transfers without donor-identifying information, please notify us if you plan to make a gift of stock.

### **Make a gift from your donor advised fund**

An increasingly popular method of charitable giving, a donor advised fund can be an easy and flexible way to manage your giving.

If you have questions about tax-wise gift making or are considering making a gift through any of the above methods, please use the following info:

**Mailing address:** Lena Pope, 3200 Sanguinet Street, Fort Worth, Texas 76107

**Tax ID number:** 75-6003583

**Phone:** 817-255-2606

**Contact:** Cathy R. Sheffield, Chief Advancement Officer

**Email:** [advancement@lenapope.org](mailto:advancement@lenapope.org)

\*The information in this publication is not intended as legal or tax advice. For such advice, please consult an attorney or tax advisor. Figures cited in any examples are for illustrative purposes only. References to tax rates include federal taxes only and are subject to change. State law may further impact your individual results.

**Stay connected with us on social media!**



[facebook.com/LenaPopeFW](https://facebook.com/LenaPopeFW)



[instagram.com/lenapope](https://instagram.com/lenapope)



[linkedin.com/company/lena-pope](https://linkedin.com/company/lena-pope)